

ABSOLUTE AUCTION

FRIDAY, OCTOBER 18, 2024, 12:00 PM
REAL ESTATE SELLS FIRST



REAL ESTATE



ONLINE BIDDING AVAILABLE ON REAL ESTATE

AUCTION HIGHLIGHTS

- Approx. 66,000 Sq. Ft. Building, New In 2007-08 Metal Sided & Roof On Poured Concrete Foundation, 3 Phase 480 Electric, Adaptable To Multitude Of Uses, Poultry, Swine, Beef, Horses, Storage Or Shop
- Originally Built For Dairy & Never Completed
- Older 1.5-Story House
- Fenced Pasture, 2 Fishing Ponds

Also Selling

- Ford Tractor
- 2 Feed Bins
- Misc. Equipment

REAL ESTATE

Main building – 100 X 500 drive through concrete with 120 X 60 indoor arena and 18 horse stalls, 180 X 40 holding pen and parlor with basement mostly concrete. 40 X 78 milk house with 78' covered concrete porch, basement with electric components. 20 X 80 side pole addition with concrete. 3 water wells and spring, underground manure storage, never used. Metal roof and sides. Most well lighted, office area, etc. Over 30 exhaust fans. Originally built for 400 free stalls with drive through feeding. Older 1,680 sq. ft. century home, storage and tile block foundation, LP gas and central air, kitchen, living room, dining room, bath, 2 rooms up. Two nice ponds with good fishing. High tensile fencing. Gas and oil previously reserved. Only 15 minutes off I-77 & Rt. 40.

Preview on Thursday, Oct. 17, 10:00 AM-2:00 PM or sale morning.

22+ ACRES

Richland Twp.,
Guernsey Co.

19092 RAVEN RD.,
SALESVILLE, OH 43778

www.kikoauctions.com | 800.533.5456

Information is believed to be accurate but not guaranteed.
KIKO Auctioneers



MLS



Scan for auction details, including directions.

Absolute Auction.
All sells to the highest bidders on location.

TERMS ON REAL ESTATE

10% down auction day, balance due at closing. A 10% buyer's premium will be added to the highest bid to establish the purchase price. Any desired inspections must be made prior to bidding. All information contained herein was derived from sources believed to be correct. Information is believed to be accurate but not guaranteed.

TRACTOR, FEED BINS, BLEACHERS, ETC

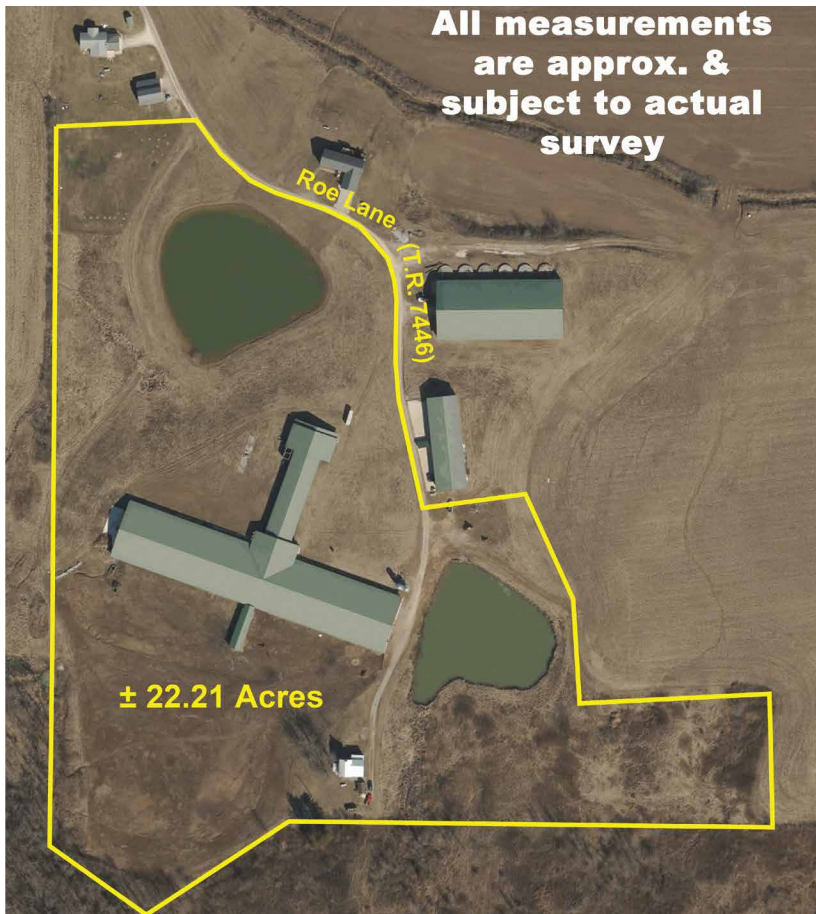
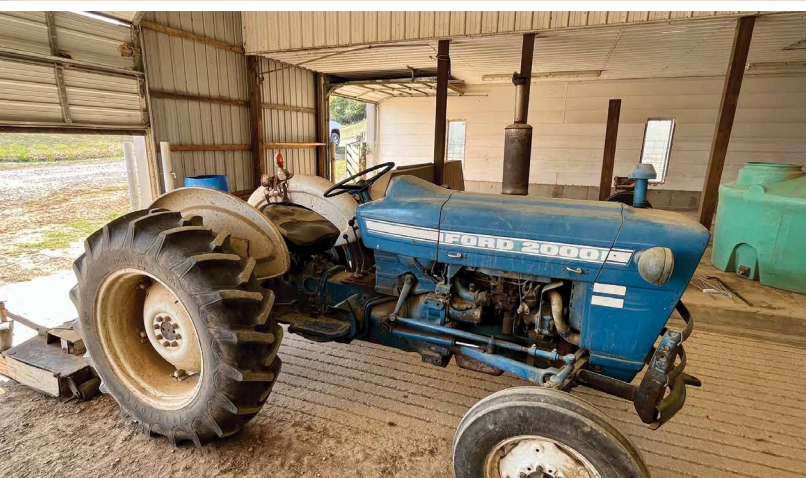
Ford 2000 gas 3 pt PS 2,700 hrs; 3 pt 6' finish mower; 3 pt blade; 3 pt. 5' brush hog; (2) Valco feed bins, 3 ring, 8' dia., 20 X 4" auger & 6 ring 8" dia., 6 X 20 auger, both like new; 4 link new Richie auto water 2'W X 5'L; (2) 3 bench 24' alum. bleachers; (1) 16' 3 bench bleachers; 2 stacks 10' 1 & 1.5' rough cut lumber; (4) 10' lock in corral panels and entrance and sweep; (2) Coke vending machines; large pcs parlor SS that never installed, 2" & 4" pipe, rebar, concrete wire; 8 lock in rubber mats; several assorted pipe gates; round bale feeder; auto washer; window air units; chain-link dog panels; 6" X 20' heavy PVC pipe

TERMS ON CHATTELS

Driver's license or State ID required to register for bidder number. Cash, Check, Debit Card, Visa, or Master Card accepted. 4% buyer's premium on all sales; 4% waived for cash or check when paid sale day. Information is believed to be accurate but not guaranteed. Multi Par auction process may be used.

AUCTION BY ORDER OF

M & H Forestry and Land Inc.



RUSSELL T. (RUSTY) KIKO, JR.
AUCTIONEER/REALTOR
330.495.0923
rustykiko@kikocompany.com



WILBER "BILL" BIRNEY
AUCTIONEER/REALTOR
740.317.4497
billybirney@kikocompany.com



REALTORS
AUCTIONEERS
ADVISORS

Information is believed to be accurate but not guaranteed. KIKO Auctioneers

